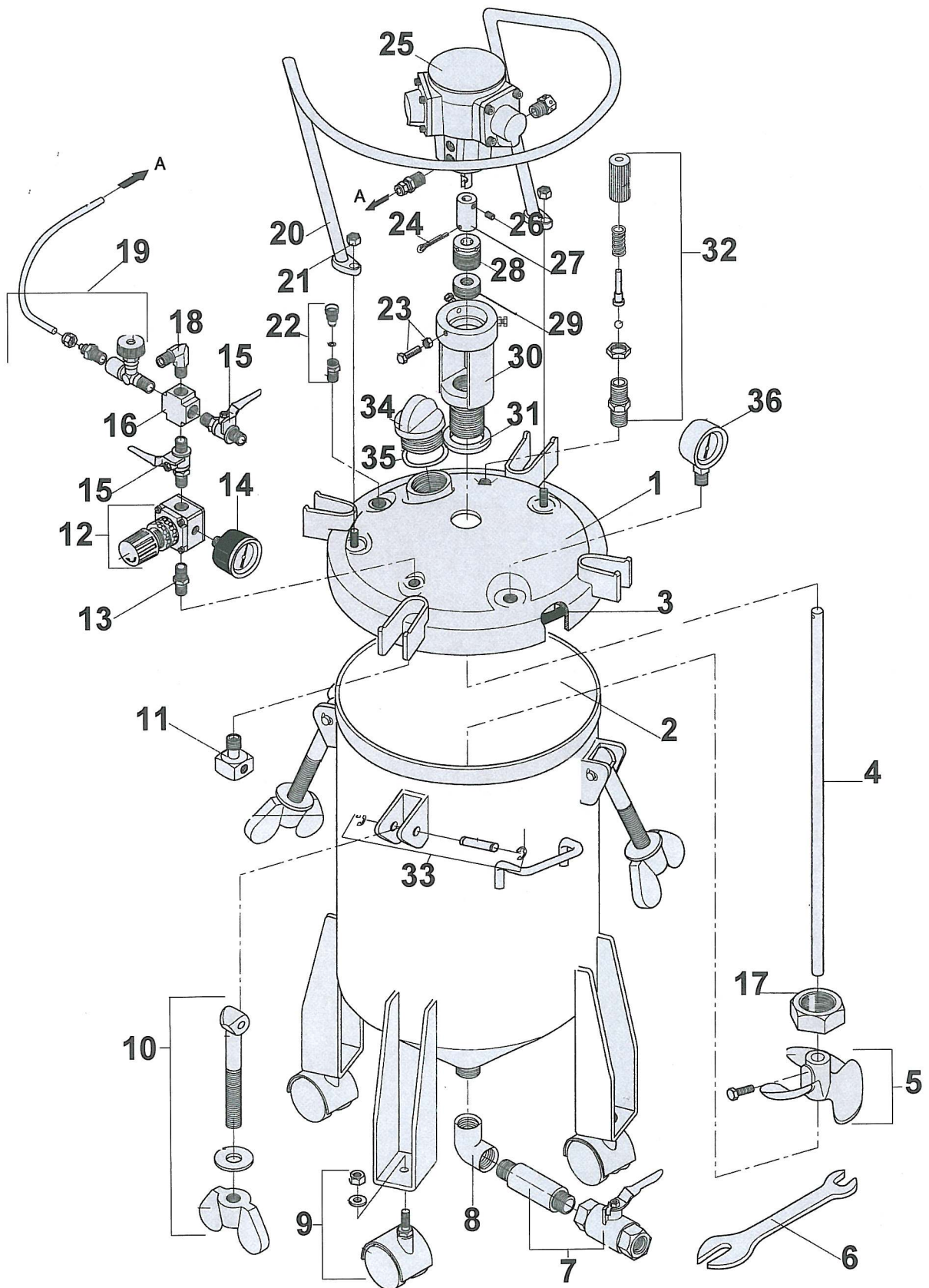


10 GALLON PRESSURE BOTTOM OUTLET TANK WITH AIR AGIT





GENERAL INSTRUCTIONS

This pressure tank is equipped with either single or double regulators, pressure safety relief valve, tank vent valve, bottom outlet ball valve and an air powered agitator.

1. Turn regulators to zero. Close ball valves. Turn agitator knob to off position. Fill tank with product and tighten down lid with wrench provided.
2. With air from compressor on, open all ball vaves. Adjust pot pressure as needed to flow material to gun.
3. Adjust gun regulator if provided, to atomize material as needed.
4. Adjust agitator knob to the slowest speed that mixex the material as needed.

CAUTION

- Do not exceed tank working pressure of 80 Psi. The safety relief valve is designed to protect the tank against excessive pressure. DO NOT attempt to make any adjustments to this valve. If tank begins to vent air pressure, reduce the pressure on the tank regulator.
- DO NOT alter the tank in any way. This includes welding, machining and drilling as this may weaken the structure of the tank.
- ALWAYS groung the tank with a 12 gage wire to the tank and a known earth ground to avoid hazardous electric sprks from occurring.
- BE SURE tank pressure is completely relieved before attempting to remove tank lid. Always shut off main supply air to the tank, and vent pressure from the tank with the vent valve located on tank cover.

| ITEM NO. | PART NUMBER | DESCRIPTION |
|----------|-------------|--|
| 1 | 51-577 | TANK LID |
| 2 | 51-579 | BOTTOM OUTLET SHELL |
| 3 | 51-520 | GASKET |
| 4 | 51-576 | AGIT SHAFT |
| 5 | 51-246 | PROPELLER W/ BOLT |
| 6 | 51-225 | WRENCH |
| 7 | 51-274 | FLUID OUTLET BALLVALVE |
| 8 | 51-275 | FLUID OUTLET ELBOW |
| 9 | 51-224 | CASTER (OPTIOAL STATIONARY FEET AVAILABLE, P/N 51-252) |
| 10 | 51-236 | EYE BOLT ASSEMBLY |
| 11 | 51-237 | AIR FLOW DIFUSSER |
| 12 | 51-222 | AIR REGULATOR ASSEMBLY |
| 13 | 51-239 | DOUBLE MALE NIPPLE |
| 14 | 52-56 | PRESSURE GAGE |
| 15 | 52-150 | AIR SHUT OFF VALVES |
| 16 | 51-267 | 4 WAY UNION |
| 17 | 51-259 | RETAINING NUT |
| 18 | 51-268 | 90 DEGREE ELBOW |
| 19 | 51-247 | SPEED CONTROL VALVE FOR AGITATOR |
| 20 | 51-535 | GUARD |
| 21 | 98-0115 | 3/8-16 NUT |
| 22 | 51-234 | TANK VENT VALVE |
| 23 | 51-264 | SCREW & NUT 1/4-20 x 1" lg. |
| 24 | 51-266 | ROLL PIN |
| 25 | 51-240 | AIR MOTOR |
| 26 | 51-262 | SET SCREW 1/4-20 x 1/4 lg. |
| 27 | 51-242 | COUPLING |
| 28 | 51-243 | GUIDE |
| 29 | 51-289 | SHAFT SEAL ASSEMBLY |
| 30 | 51-241 | AIR MOTOR BASE |
| 31 | 51-245 | SEAL RING |
| 32 | 51-229 | SAFETY RELIEF VALVE ASSY. |
| 33 | 51-233 | PIN ASSEMBLY |
| 34 | 51-524 | MATERIAL FILL CAP |
| 35 | 51-522 | SEAL RING - FILLER CAP |
| 36 | 52-58 | PRESSURE GAGE |

BOTTOM OUTLET TANKS

| 2.5 GALLON | PART # | REGULATORS | AGITATOR |
|-----------------------|---------------|-------------------|-----------------|
| | 51-210 | 0 | 0 |
| | 51-211 | 1 | 0 |
| | 51-212 | 2 | 0 |
| | 51-213 | 1 | AIR |
| | 51-214 | 2 | AIR |
| | 51-215 | 0 | AIR |

| 5 GALLON | PART # | REGULATORS | AGITATOR |
|---------------------|---------------|-------------------|-----------------|
| | 51-510 | 0 | 0 |
| | 51-511 | 1 | 0 |
| | 51-512 | 2 | 0 |
| | 51-514 | 1 | AIR |
| | 51-515 | 2 | AIR |
| | 51-513 | 0 | AIR |

| 10 GALLON | PART # | REGULATORS | AGITATOR |
|----------------------|---------------|-------------------|-----------------|
| | 51-560 | 0 | 0 |
| | 51-561 | 1 | 0 |
| | 51-562 | 2 | 0 |
| | 51-564 | 1 | AIR |
| | 51-565 | 2 | AIR |
| | 51-563 | 0 | AIR |